

Hesham Faili, Professor

Head of Software Engineering Group

Member of Robotics and Machine Intelligence Group

Director of Natural Language and Text Processing Laboratory

Electrical and Computer Engineering Department

University of Tehran

Email

[hfaili@ut.ac.ir](mailto:hfaili@ut.ac.ir)

Website

<http://ece.ut.ac.ir/~hfaili>



# شبکه عصبی و پردازش زبان طبیعی در پزشکی

هوش مصنوعی

شبکه عصبی عمیق

هوش مصنوعی مولد  
Generative AI

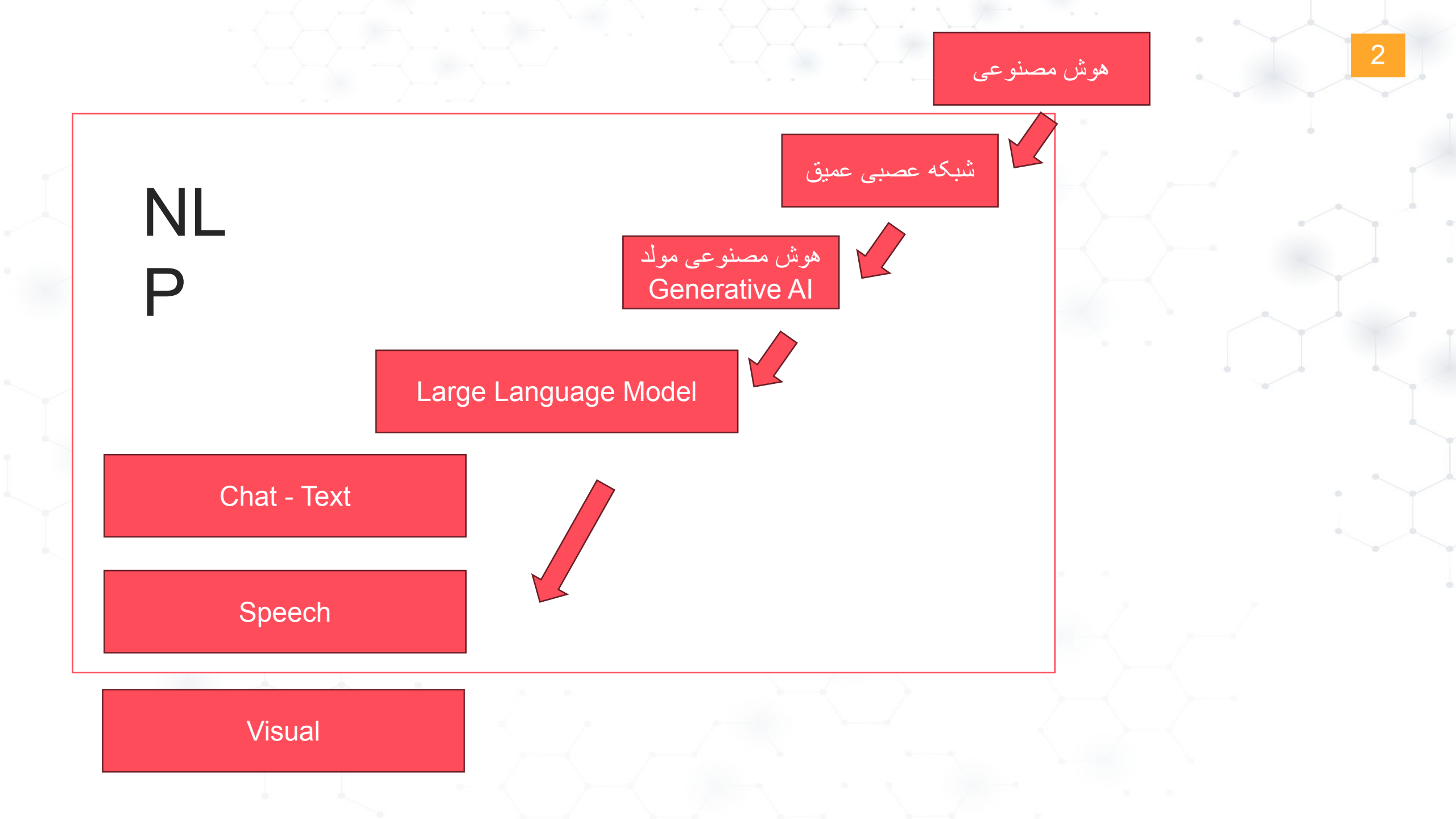
Large Language Model

Chat - Text

Speech

Visual

NL  
P



# مغز انسان



apple

0.52

0.56

-1.67

0.34

...

embedding



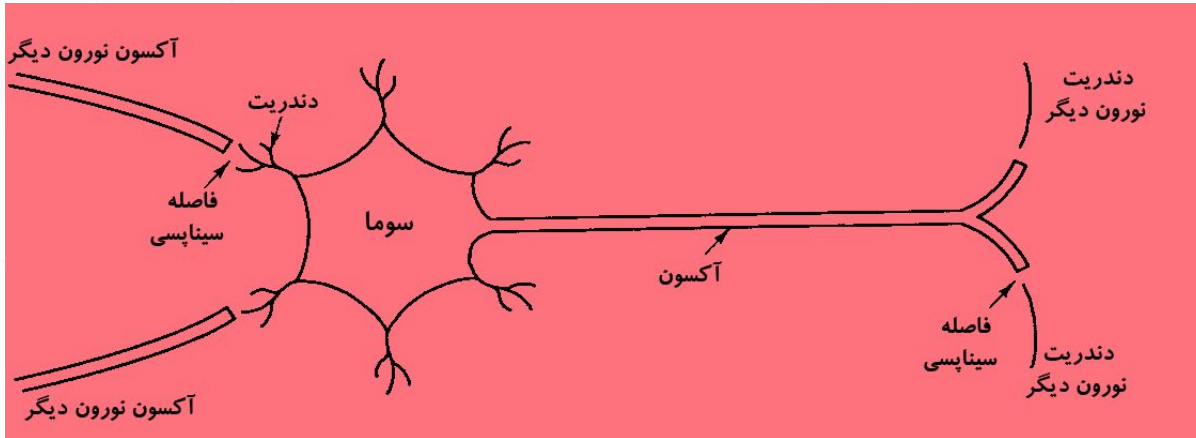
# مغز انسان

مغز انسان = شبکه‌ای بزرگ از عصب‌ها (نرون‌ها)

100.000.000.000 نرون

10.000 اتصال (سیناپس) برای هر نرون

حدود هزار تریلیون اتصال (سیناپس)



شبکه عصبی مصنوعی = شبیه‌سازی شبکه عصبی طبیعی



## هوش مصنوعی و شبکه عصبی

• تولد نخستین شبکه عصبی مصنوعی - ۱۹۴۳

• مک کلاچ و پیتز

• آزمون تورینگ - 1950

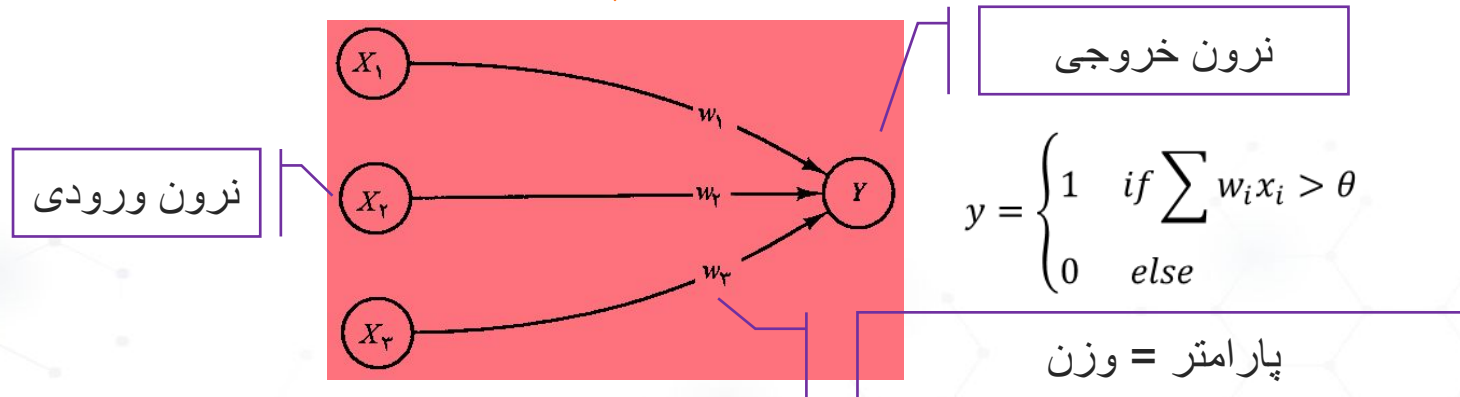
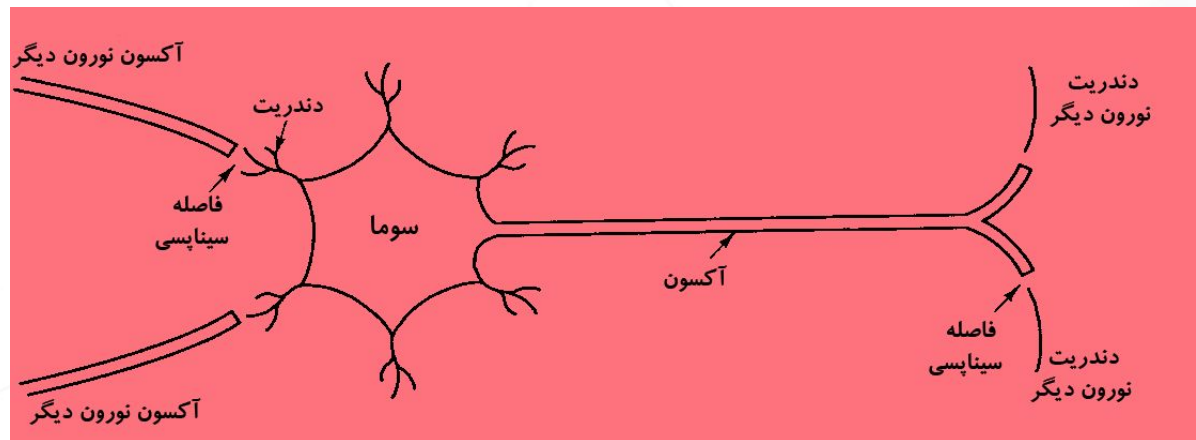
• آلن تورینگ

• تولد واژه هوش مصنوعی - ۱۹۵۵

• جان مک کارتی



# شبکه عصبی مصنوعی



$$y = \begin{cases} 1 & \text{if } \sum w_i x_i > \theta \\ 0 & \text{else} \end{cases}$$

## شبکه عصبی مصنوعی: یادگیری

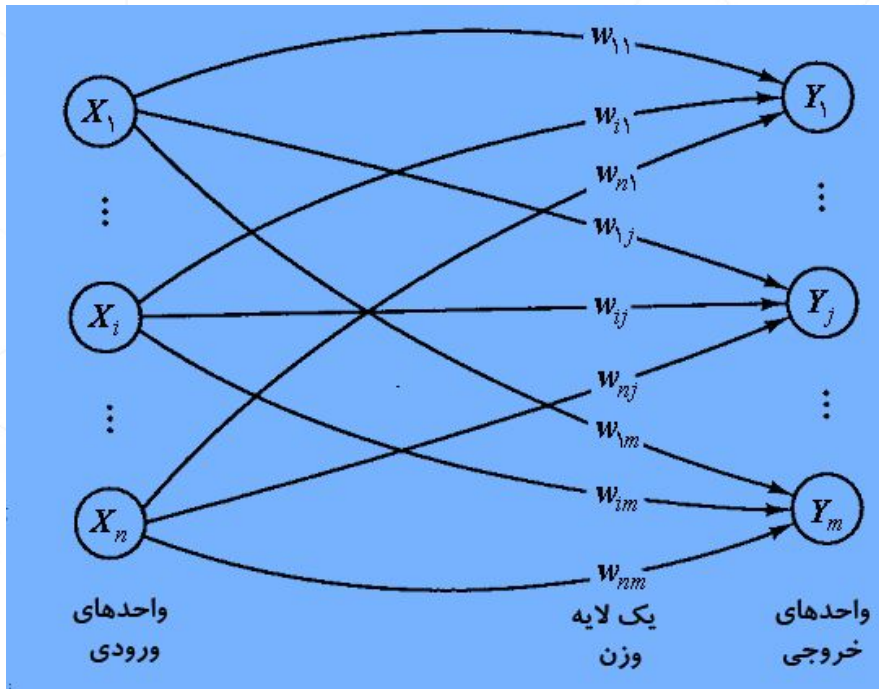


یادگیری پارامترهای مدل از روی نمونه داده: تک لایه

• هب (دونالد هب) - 1949

• پرسپترون (روزنبلات) - 1958

• آدالاین (ویدرو و هاف) - 1960

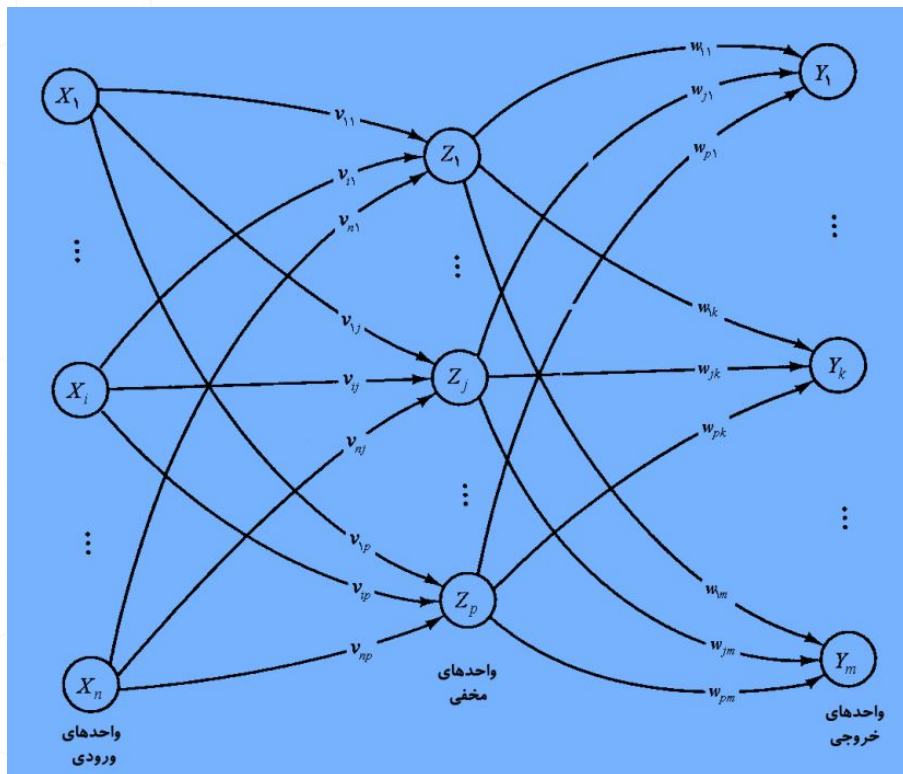




# شبکه عصبی مصنوعی: یادگیری

## پرسپترون چندلایه

• پس انتشار خطا (روملهارت، هینتون و ویلیامز) - 1985

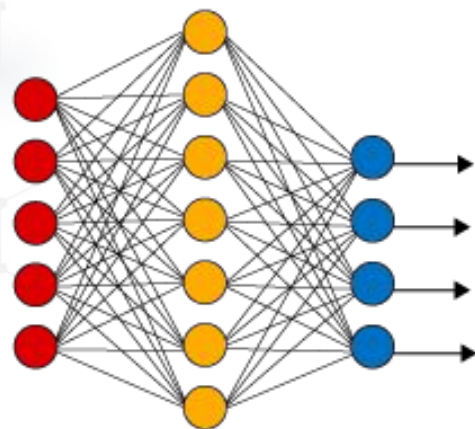




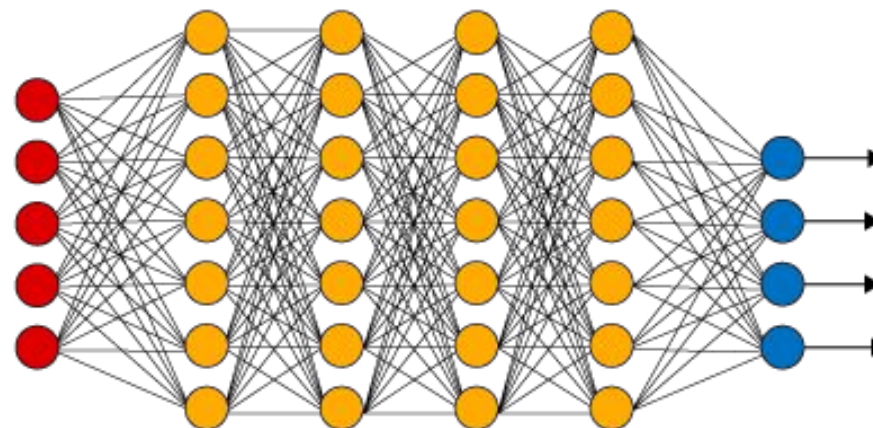
## شبکه عصبی عمیق

افزایش تعداد لایه‌های مخفی

Simple Neural Network



Deep Learning Neural Network



● Input Layer

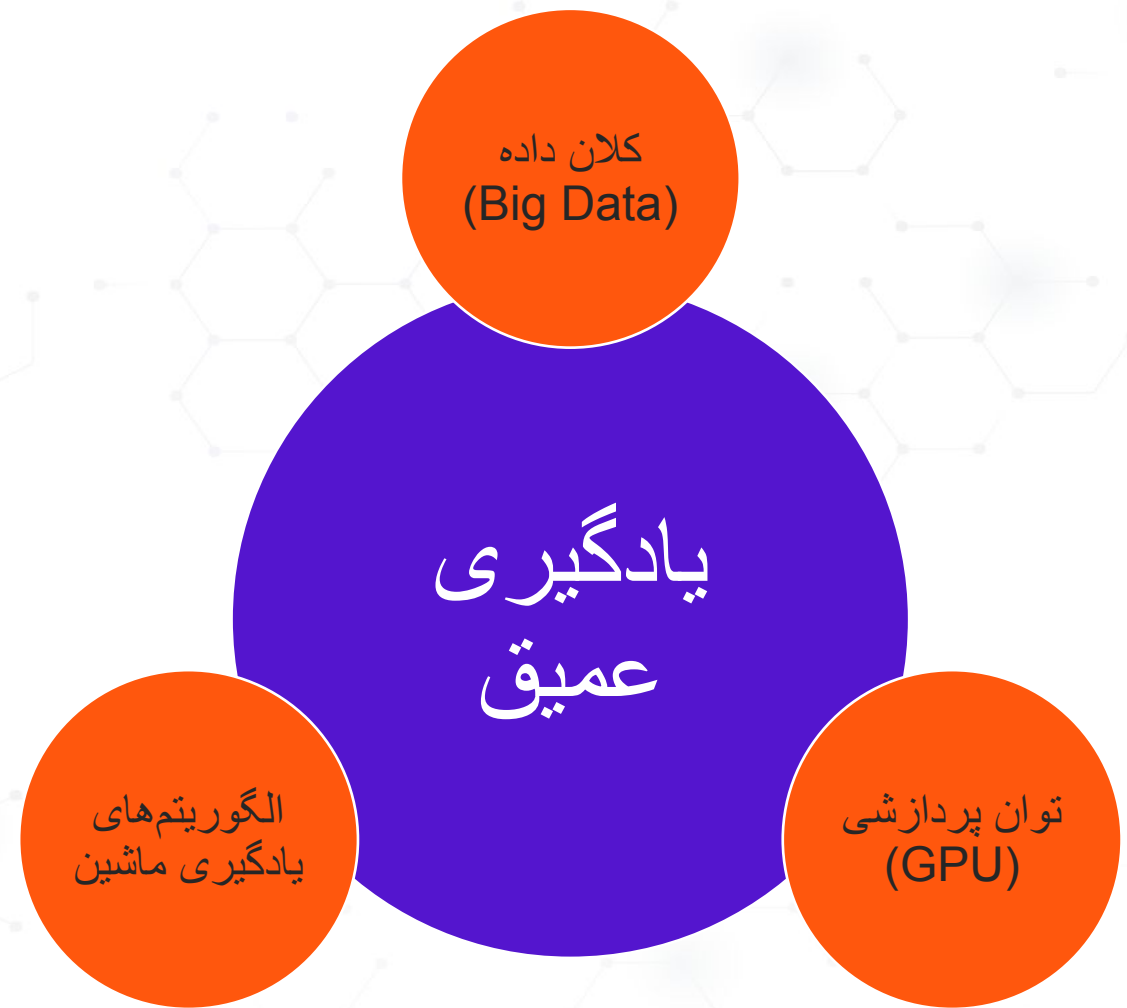
● Hidden Layer

● Output Layer

● مدل پیچیده = تعداد پارامترهای زیاد = توان محاسباتی بالا



# دگرگونی یادگیری با عمیق شدن

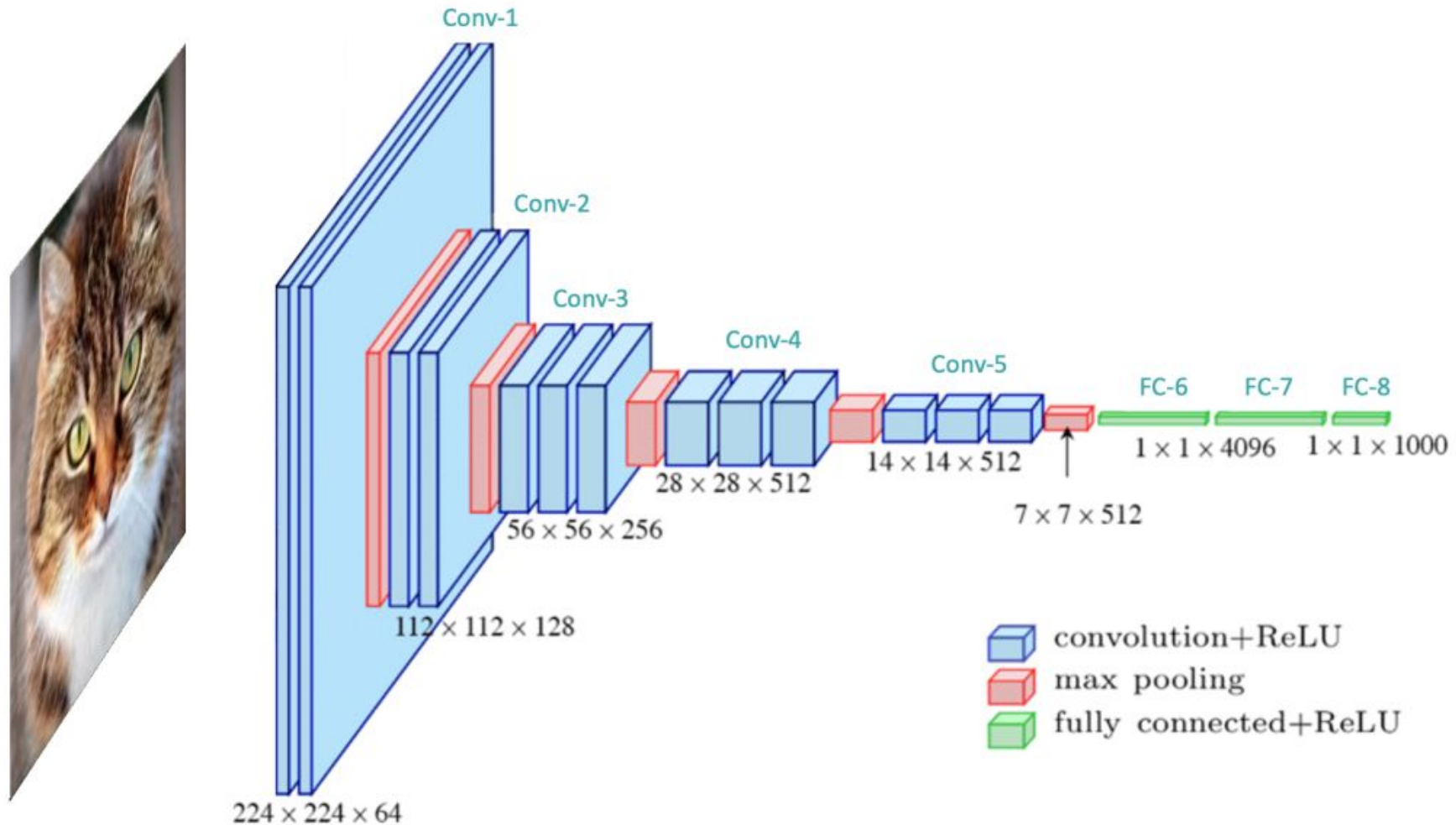




# هوش مصنوعی مولد (Generative AI)

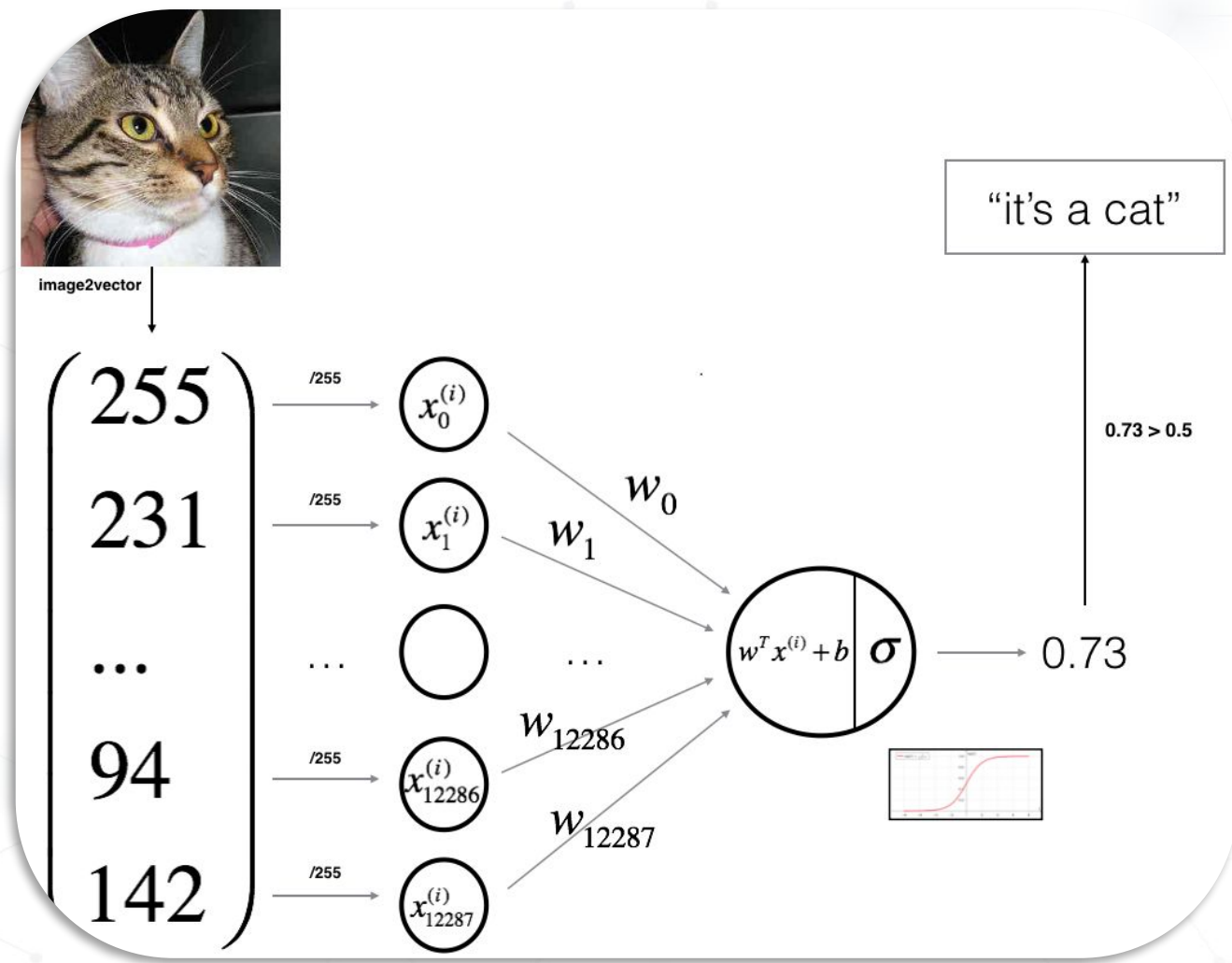
- تصویر
- متن
- صدا (گفتار)
- کد (کامپیوتری)
- موسیقی
- ویدیو
- ...

# CNN: Conv. Neural Net شبکه

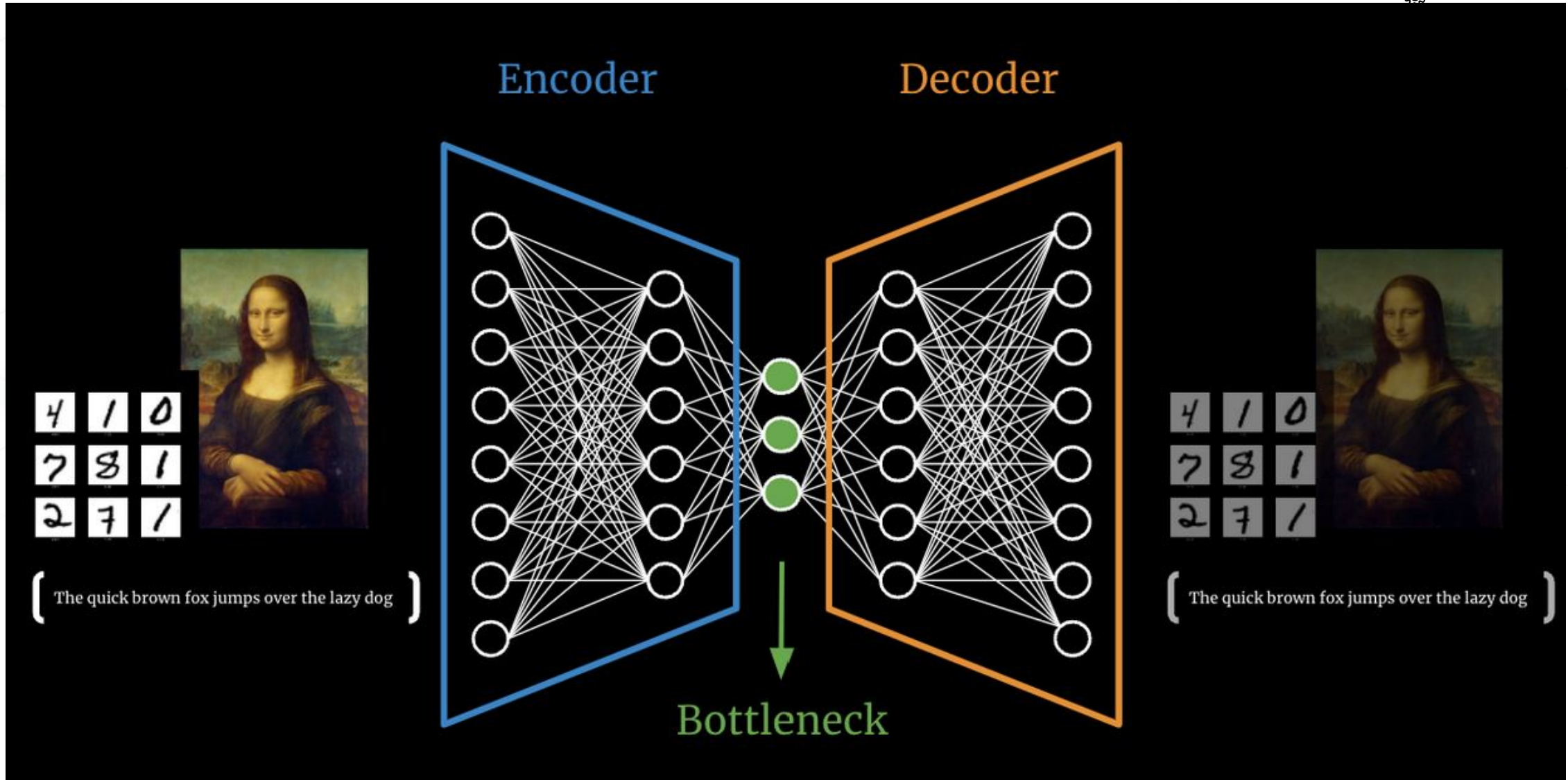


1998- LeCun, Yann, Léon Bottou, Yoshua Bengio, and Patrick Haffner  
 2012- Krizhevsky, Alex, Ilya Sutskever, and Geoffrey E. Hinton

# شبكة عصبی مصنوعی - Image to text (image captioning)



# شبکه Auto-Encoder





# مدل زبانی Language Model

فارسی یا پارسی زبان رسمی کشور ایران ...

پیش‌بینی کلمه بعدی

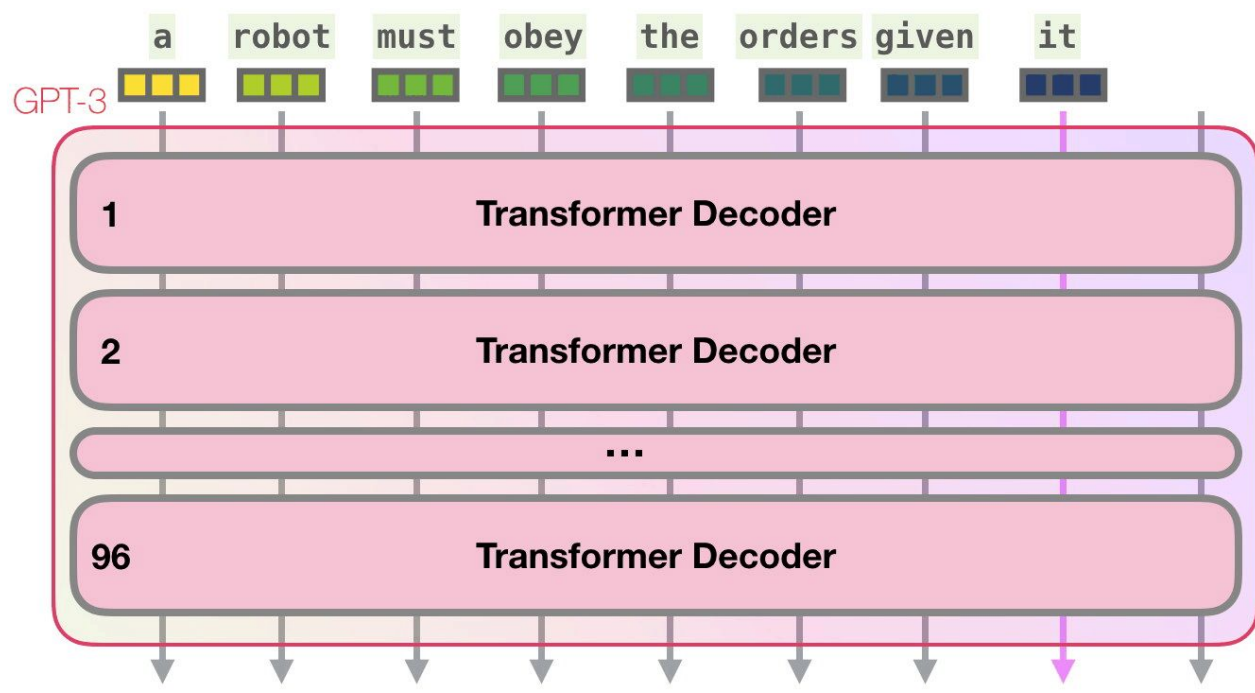
سابقه/بافت متن

# مدل زبانی مبتنی بر مبدل: GPT3



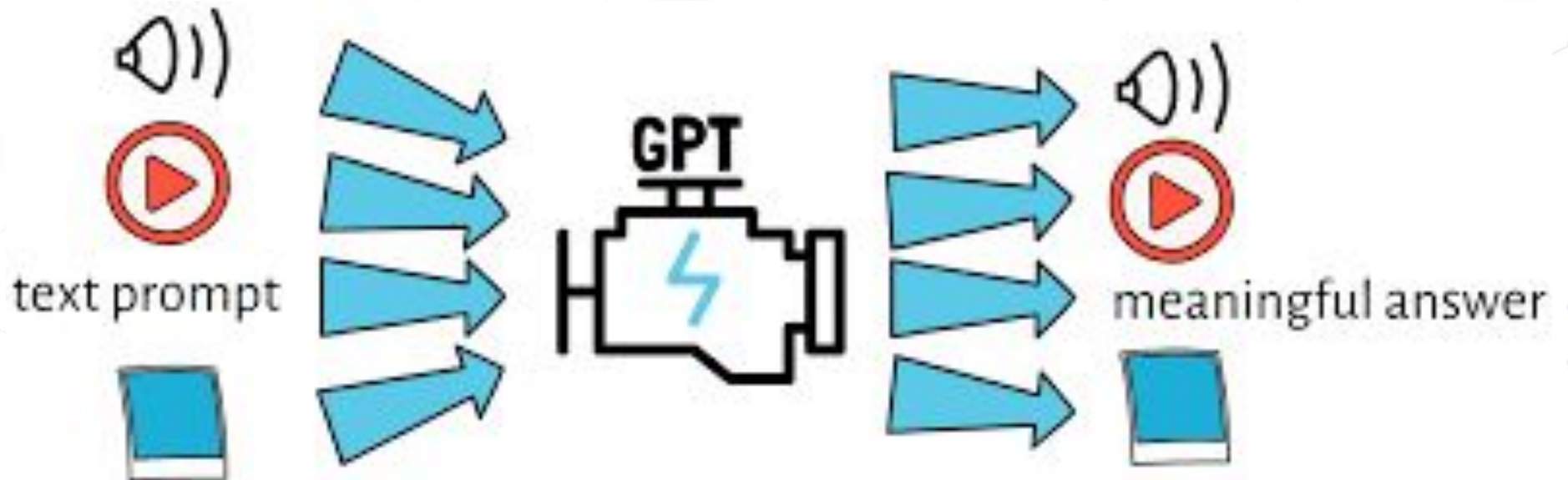
## مدل GPT3

- طول دنباله ورودی: 2048 توکن (کلمه)
- تعداد لایه (رمزگذارها): 96 (هر کدام 1.8 میلیون پارامتر)
- داده: حدود 500 میلیارد توکن





# Multi Modal LLM



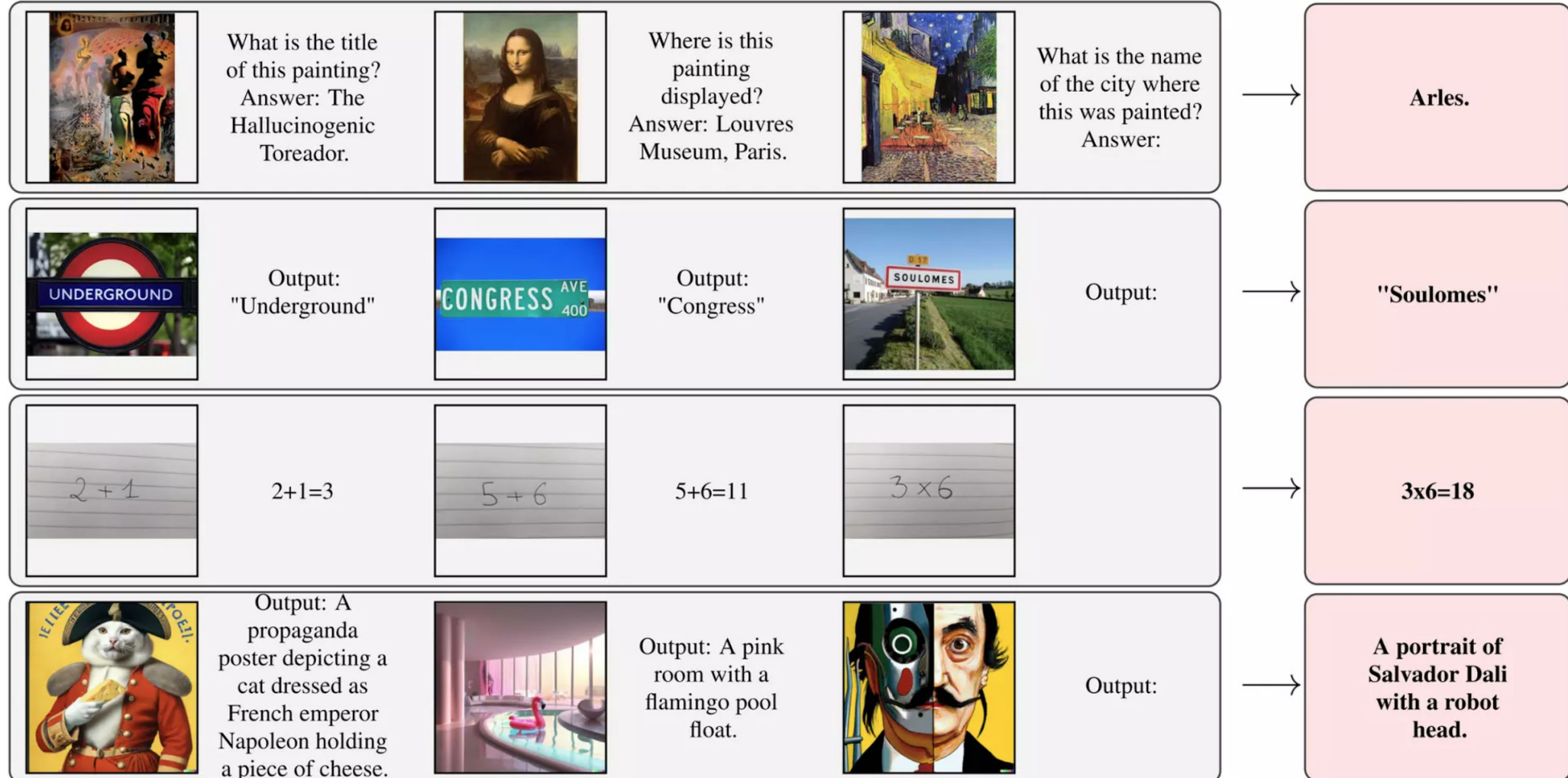
# Multi Modal LLMs



Flamingo: a Visual Language Model for Few-Shot Learning

2022 – Deep Mind

# Flamingo: a Visual Language Model for Few-Shot Learning




# Applications



## Disease Diagnosis

# Disease Diagnosis

 disease diagnosis with artificial intelligence 

 سال پژوهشگر  تقریباً ۲,۳۳۰,۰۰۰ نتیجه (۰,۲۰ ثانیه)

[jmir.org \[HTML\]](#)      [Artificial intelligence versus clinicians in \*\*disease diagnosis\*\*: systematic review \[HTML\]](#)

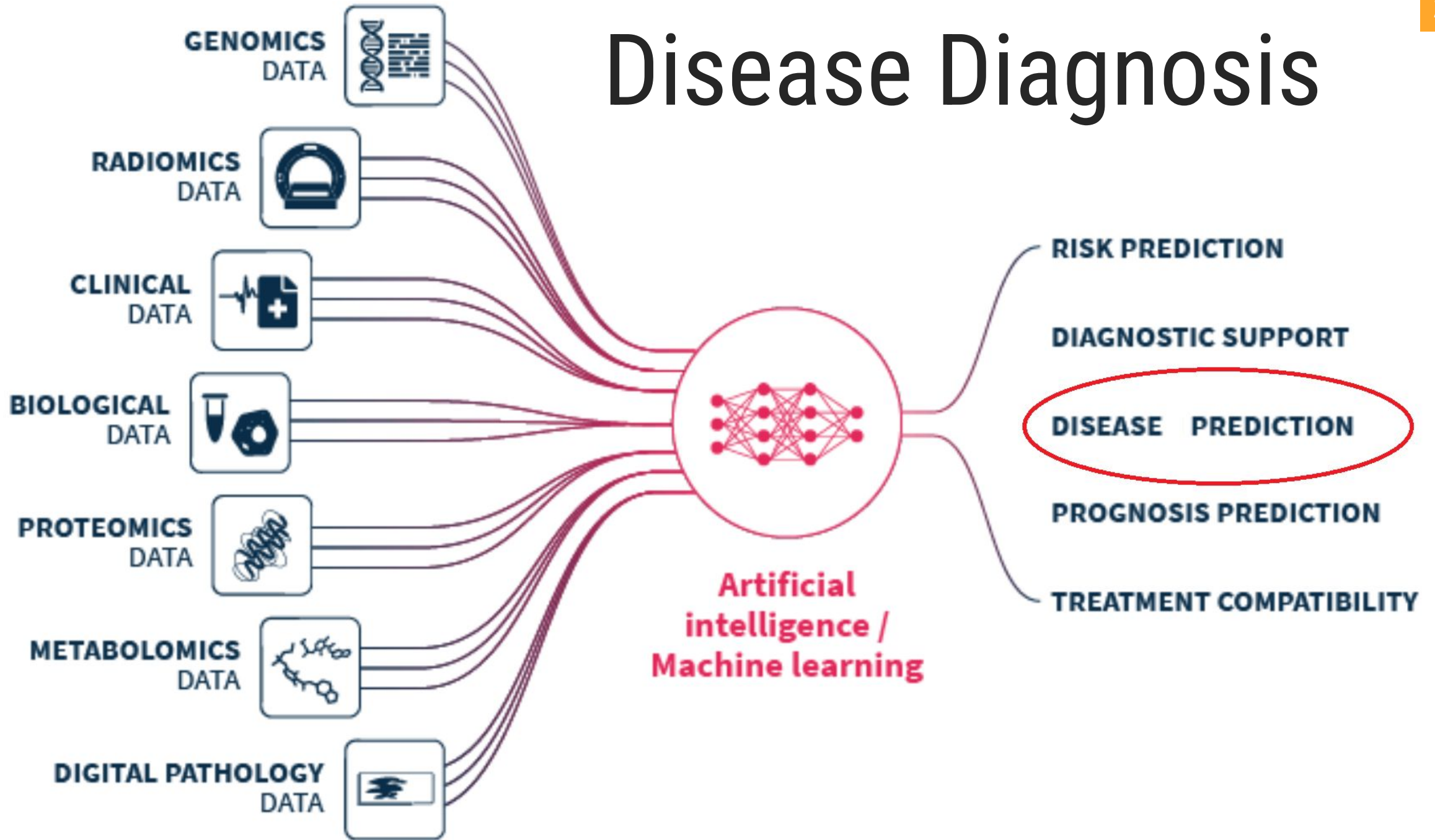
[medinform.jmir.org - J Shen, CJP Zhang, B Jiang, J Chen... - JMIR medical ..., 2019](#)

... Our systematic review identified 9 articles on advanced AI applications for **disease diagnosis**.  
These spanned multiple medical subjects, including retinal **diseases**, skin cancers, ...

☆ ذخیره  ارجاع بیان شده در 218 یافته مقاله‌های مربوط تمام نسخه‌های 12 

[springer.com \[HTML\]](#)      [Evaluation of \*\*artificial intelligence\*\* techniques in \*\*disease diagnosis\*\* and prediction \[HTML\]](#)  
Full View

# Disease Diagnosis



# Self Diagnosis Apps, for Patients and Doctors 23



ADA -  
apple



K  
health



Symptoma  
te

# Ada Health



ada

**Supporting better health outcomes and clinical excellence with intelligent technology.**

Berlin based



# Applications



Health Advice and  
Chatbot  
Assistants

# Health Advice

- Everyday millions of people turn to the Internet for health information and treatment advice
- In Australia, around 80% of people search the Internet for health information, and nearly 40% seek guidance online for self-treatment
- In the US, almost two-thirds of adults search the Web for health information and roughly one-third utilize it for *self-diagnosis*

# Health Advice

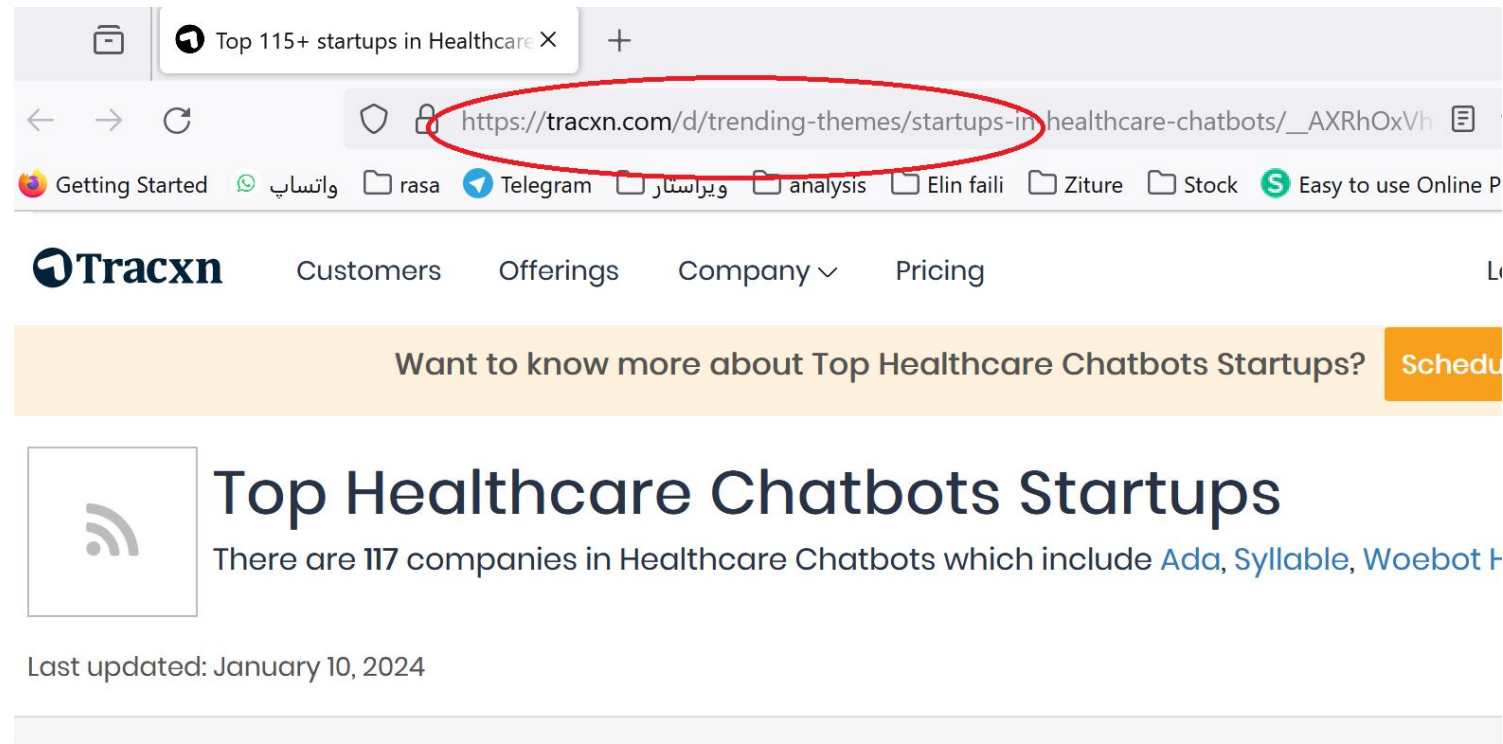
- A recent study showed that half of the patients investigated their symptoms on search engines before visiting emergency departments
- Search engines (e.g., Google and Bing) are exceptional tools for educating people, but they may facilitate misdiagnosis!
- Some governments have even launched “Don’t Google It” advertising campaigns to urge their residents to avoid assessing their health using search engines

# Health Advice

- In contrary, AI-based *symptom checkers* are tools that can assist patients in self-diagnosing themselves
  - They are constantly and instantly available!
- Studies show that more than 15 million people use symptom checkers per month, a number that is likely to keep growing
- However, the utility and promise of symptom checkers cannot be materialized if they do not prove to be accurate in self-diagnosis

# Chatbot in Health

- Market : \$1.2 billion by 2032, from \$196 million in 2022
- Over a hundred startup in healthcare chatbot




Top 115+ startups in Healthcare X +

← → ↻ [https://tracxn.com/d/trending-themes/startups-in-healthcare-chatbots/\\_AXRhOxVh](https://tracxn.com/d/trending-themes/startups-in-healthcare-chatbots/_AXRhOxVh)

Getting Started واتساب 📁 rasa Telegram ويراستار 📁 analysis 📁 Elin faili 📁 Ziture 📁 Stock 🟢 Easy to use Online P

**Tracxn** Customers Offerings Company ▾ Pricing L

Want to know more about Top Healthcare Chatbots Startups? [Schedule](#)

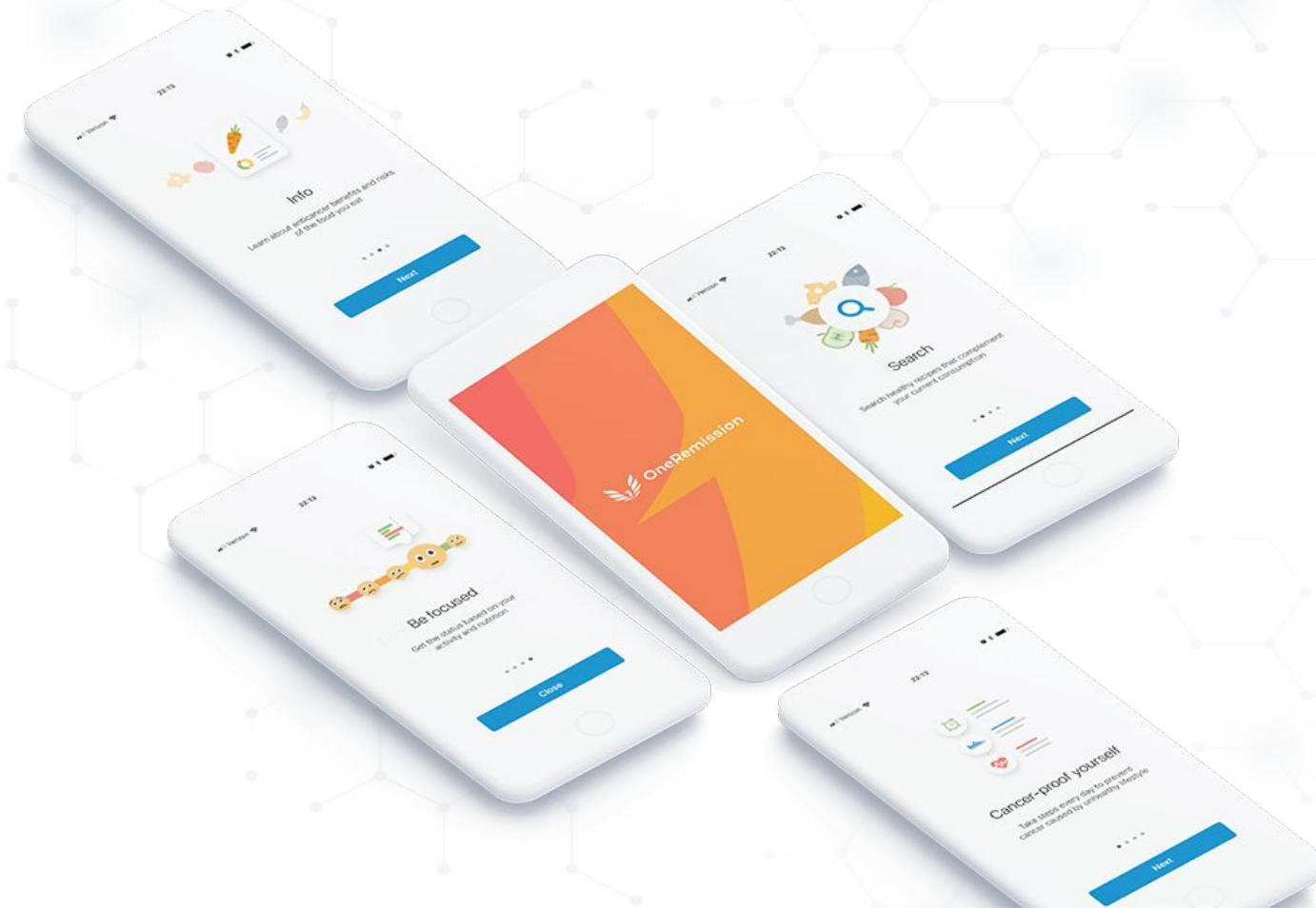
 **Top Healthcare Chatbots Startups**  
There are 117 companies in Healthcare Chatbots which include [Ada](#), [Syllable](#), [Woebot](#) +

Last updated: January 10, 2024

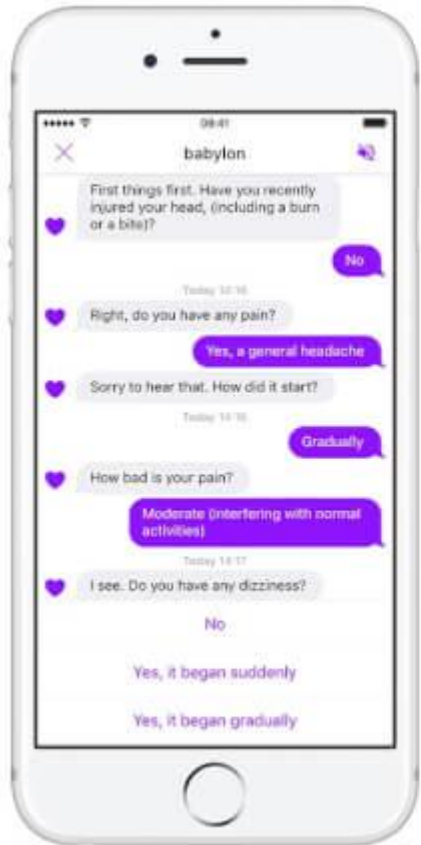
# One Remission

**Making the lives of cancer survivors easier**

New York-based



# Babylon Health



**offers AI consultation based on personal medical history and common medical knowledge as well as live video consultation with a real doctor**

# Buoy

**buoy**®

**The chatbot thoroughly  
asks you about the details  
of your medical state and  
offers you**

Boston-based



# Applications

Interpreting ICD-10  
Codes



# ICD 10 Coding

The International Statistical Classification of Diseases and Related Health Problems 10th version (**ICD 10**) is the international standard prescribed by WHO.

Search bar: automatic icd 10 classification

پژوهشگر تقریباً ۷۶,۲۰۰ نتیجه (۰,۱۱ ثانیه)

[qut.edu.au \[PDF\]](#) **Automatic ICD-10 classification of cancers from free-text death certificates**

Elsevier - [B Koopman](#), [G Zuccon](#), [A Nguyen](#), A Bergheim... - International journal of ..., 2015

... This paper proposes an **automatic classification** system for ... An effective automated method for cancer **classification** would ... a system for the **automatic classification** of cancers from

free-

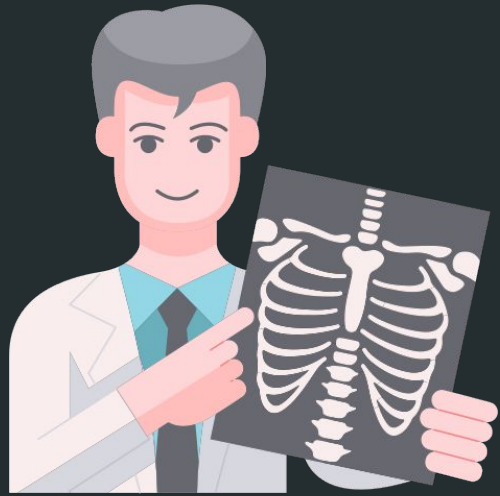
# PLM-ICD



**PLM-ICD:  
Automatic ICD Coding with  
Pretrained Language Models**

2022 ACL

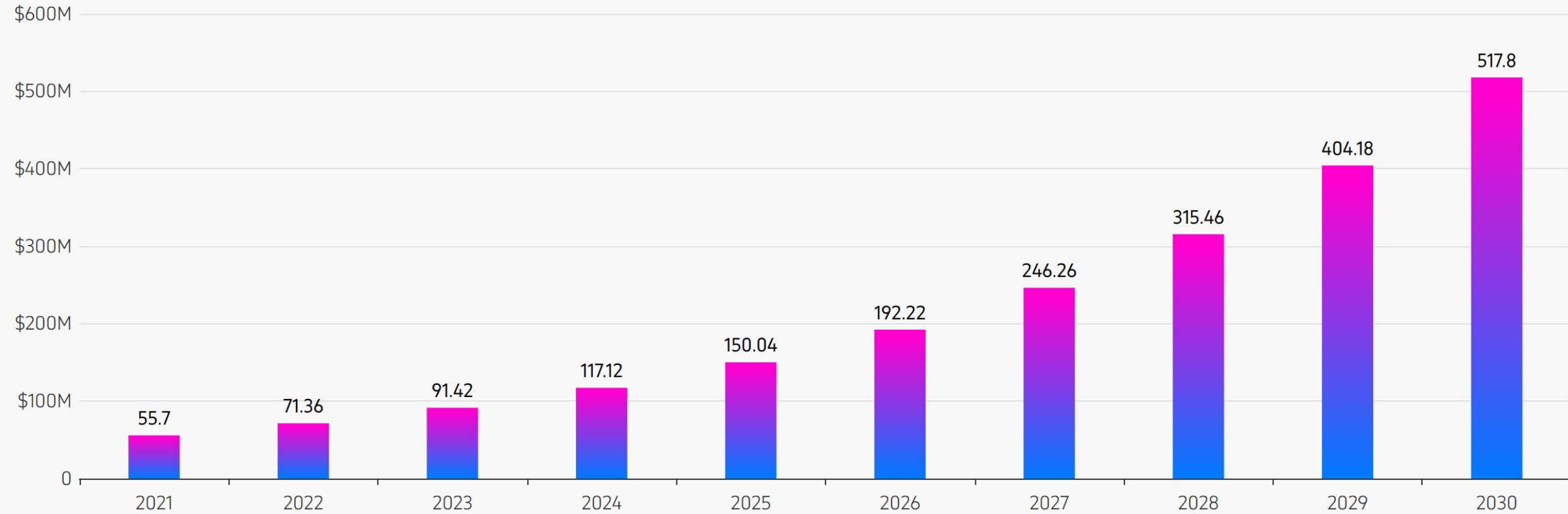
# Applications



AI in  
Radiology

## Chart title: Artificial intelligence in radiology: market size forecast, 2021-2030

Data source: Vision Research Reports



# AI in radiology market statistics



**30%**

of radiologists use AI in their  
clinical practices

American College of Radiology



**20%**

plan to purchase AI tools in the  
near future

American College of Radiology



**36.7%**

AI in the global radiology  
market CAGR from 2021 to  
2030

Vision Research Reports

# 10 AI use cases in radiology

1 Enhancing cardiac imaging

2 Classifying brain tumors

3 Spotting vertebral fractures

4 Detecting Alzheimer's disease

5 Diagnosing ALS

6 Assisting with radiology reporting & data-related tasks

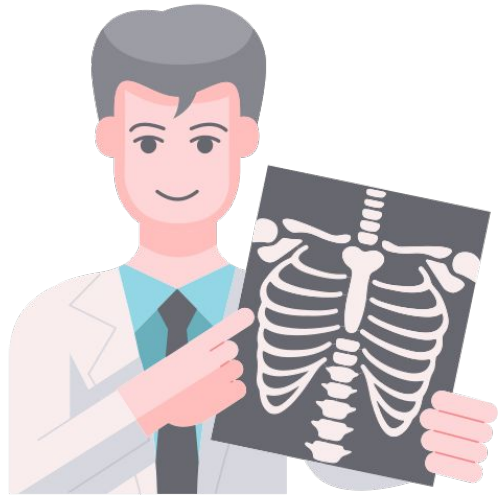
7 Detecting breast cancer

8 Dose optimization

9 Detecting pneumonia

10 Detecting LVO

# MAIRA-1



**MAIRA-1: A specialised large multimodal model for radiology report generation**

2023 – Microsoft





# LLMs in Medicals

# Med-Flamingo



Med-Flamingo: A  
Multimodal Medical  
Few-shot Learner

2023 - Snap-Stanford

# Flamingo: a Visual Language Model for Few-Shot Learning

2022 – Deep Mind

32-year-old man presents to ER 15 mins after 7-foot fall onto a wooden post. Symptoms: severe pain, rapid breathing, vitals: pulse 135/min, respirations 30/min, BP 80/40 mm Hg. (...)



**Question:** What is the most likely diagnosis?

  
Med-Flamingo

Blunt trauma to the left lung with hemothorax.

- ✓ Correct diagnosis
- ✓ Correct pathology, left-sided.

Baseline

The patient has a left-sided pneumothorax.

- ✓ Correct side, but
- ✗ Wrong diagnosis / pathology

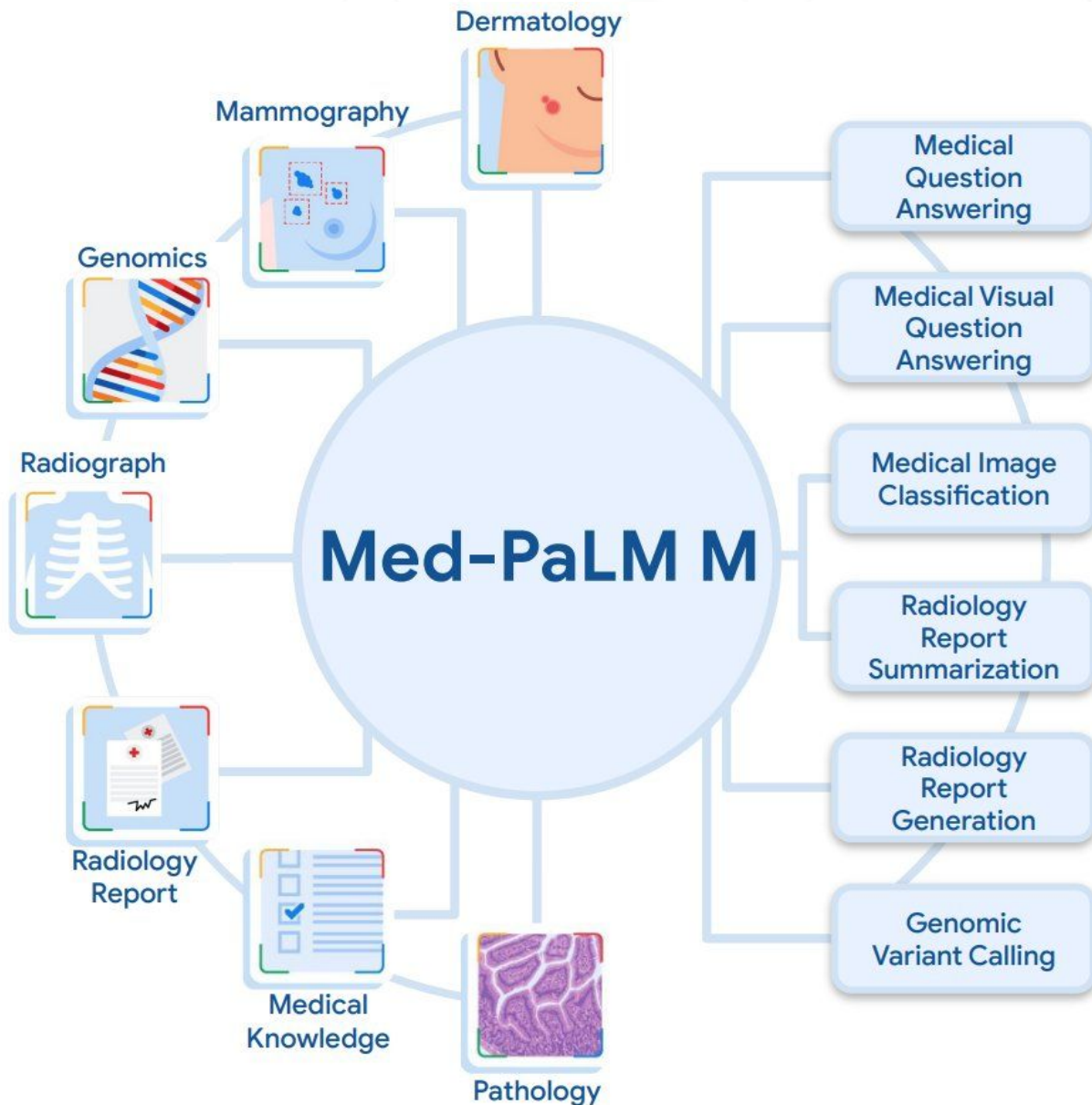
\*Chest X-ray image showing hemothorax following blunt chest trauma

# BioGPT



**BioGPT: Generative Pre-trained Transformer  
for Biomedical Text Generation and Mining**

2022 - Microsoft



Med-PaLM M

# Med-PaLM

## Towards Generalist Biomedical AI

2023 - Google

# Applications



Medical  
training

# Medical Training

- 1. Leverage social media platforms to engage learners.*
- 2. Utilize virtual reality (VR) and augmented reality (AR) to offer training opportunities.*
- 3. Create simulations for experiential learning.*

# 1. *Leverage social media platforms to engage learners.*

- **DailyRounds:** A network that offers case studies and discussions, making it ideal for doctors who want to share and learn from real-world medical cases.
- **Virtual Doctors Lounge:** The Virtual Doctors Lounge platform serves as a virtual meeting space for physicians to discuss medical cases, share insights, and seek advice from peers.
- **Among Doctors:** A community where healthcare professionals can network, collaborate, and share their expertise.
- **Student Doctor Network Forum:** An invaluable resource for students and practicing doctors alike, this forum provides a space for educational discussions and career advice.
- **Sermo:** Known for its large network of verified physicians, Sermo offers a platform for medical surveys, discussions, and collaboration on patient care.



*2. Utilize virtual reality (VR) and augmented reality (AR) to offer training opportunities.*



# 3. Create simulations for experiential learning.

50

bodyinteract.com

**BODY INTERACT™** The Simulator Solutions ▾ Help Center Learn ▾ Log in ▾

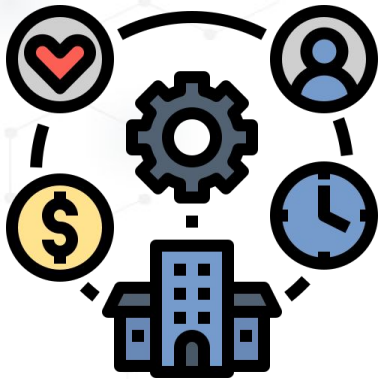
## Learn with virtual patients, save real lives

Blood Pressure	Pulse	Mary Cohen
<b>150/85</b>	<b>129</b>	<b>59</b>
SYS/DIA mmHg	/min	Kg
Breath Rate	O2 Sat	Et CO2
<b>29</b>	<b>83</b>	-
/min	%	mmHg
ECG II		

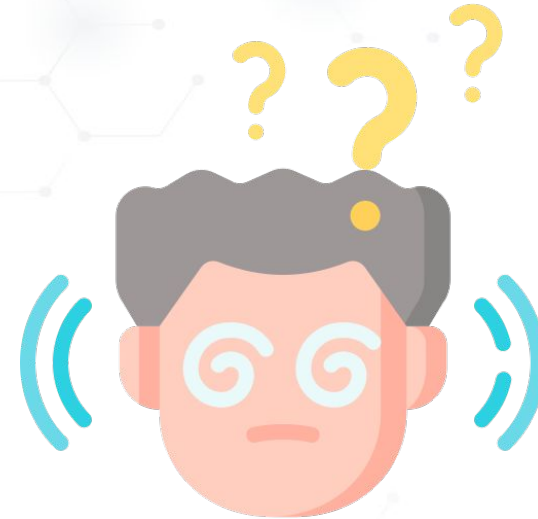
Explore features

Contact us

# Limitations

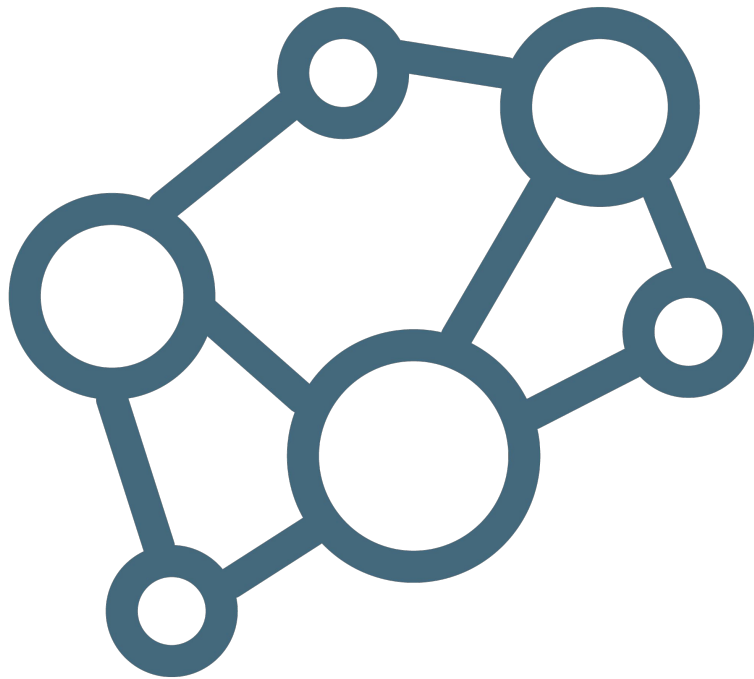


resources



Hallucination

# RAG



**Think and Retrieval: A Hypothesis Knowledge Graph Enhanced Medical Large Language Models**

2023 – Arxiv

# Med-halt



**Med-halt: Medical domain hallucination test for large language models.**

2023 – EMNLP

# End